



LAKE COUNTY

Lake County 2050

Spanish Speaking Community Focus Group

October 2024



Meeting Overview

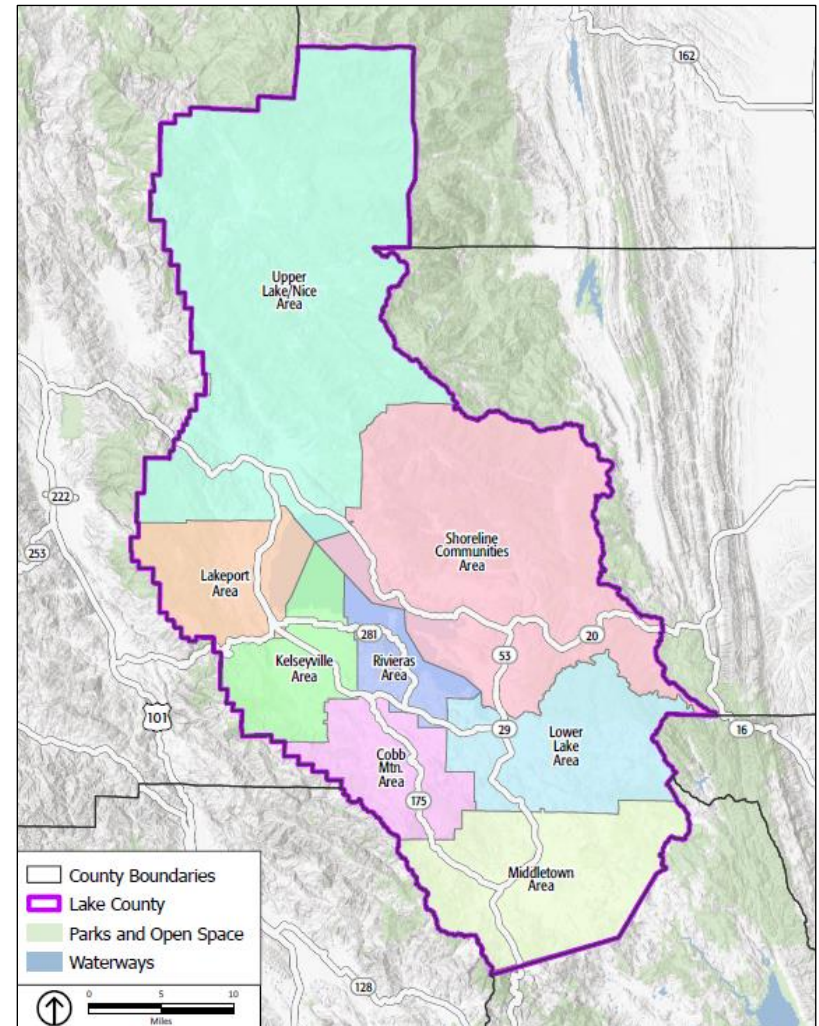
- Welcome & Introductions
- Lake County 2050 Overview
- Housing Action & Implementation Plan (HAIP) Overview
- Questions & Answers
- Small Group Discussions
- Reports Back/Summary
- Adjourn



Lake County 2050 Overview

Overview of Lake County 2050

- Comprehensive update to the General Plan, including all eight Local Area Plans:
 - Cobb Mountain
 - Kelseyville
 - Lakeport
 - Lower Lake
 - Middletown
 - Rivieras
 - Shoreline Communities
 - Upper Lake-Nice
- Related efforts:
 - Climate Adaptation Plan
 - Housing Action & Implementation Plan



What is a General Plan?

- Long-range plan, mandated by State law
- “Constitution” for development and conservation
 - Establishes countywide vision and supporting goals, policies, and actions
 - Provides consistent direction for future development
 - Balances growth, conservation, and quality of life
 - Documents baseline environmental conditions



Components of the General Plan

- **Required Topics**

- Land Use
- Open Space
- Circulation
- Housing*
- Conservation
- Safety
- Noise
- Environmental Justice

**The Housing Element will be updated separately on a different schedule.*

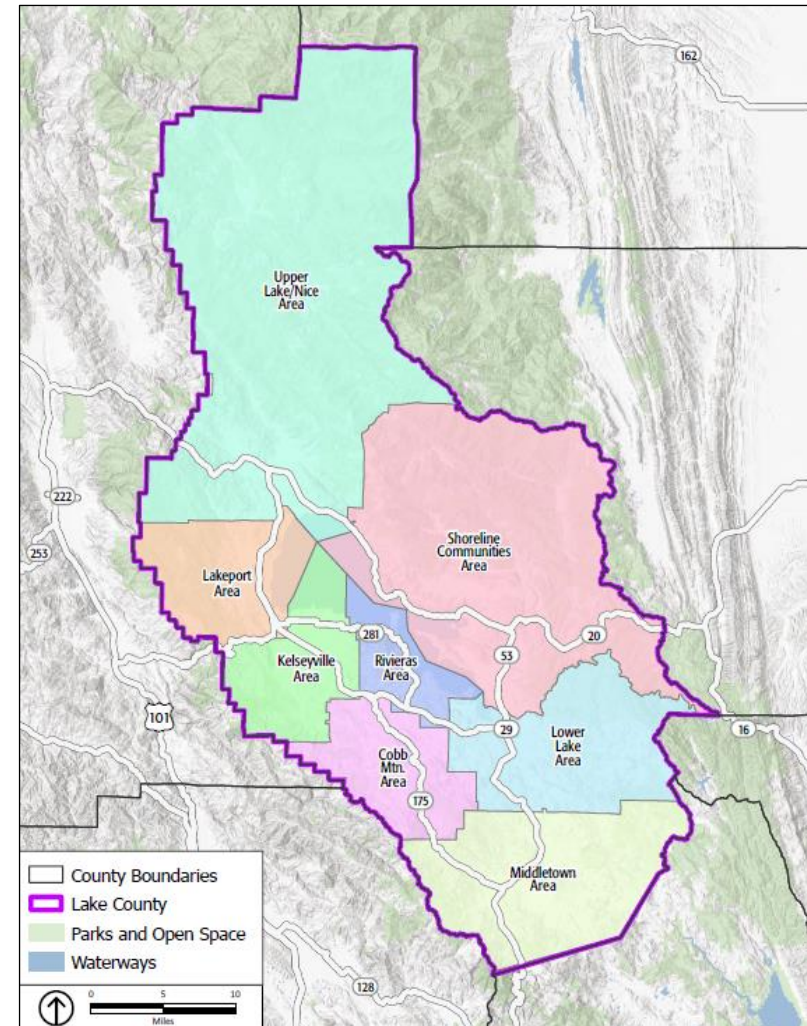
- **Optional Elements in Current General Plan**

- Aggregate Resources Management Plan*
- Agricultural Resources
- Geothermal Resources
- Public Facilities and Services
- Water Resources

**The Aggregate Resources Management Plan will be updated separately on a different schedule.*

What are Local Area Plans (LAPs)?

- Cover some required General Plan topics as well as additional, optional topics
- Consistent with all countywide elements and carry equal weight
- Reflect local characteristics
- Provide detailed policy and design guidance for the LAP area and for some communities



LAKE COUNTY 2050 General Plan

COUNTYWIDE ELEMENTS



Health and Safety



Noise



Geothermal Resources



Agricultural Resources



Water Resources



Housing



Aggregate Resources Management Plan

LOCAL AREA PLANS



Land Use



Circulation



Open Space, Conservation, and Recreation



Environmental Justice



Public Facilities and Services



Economic Development



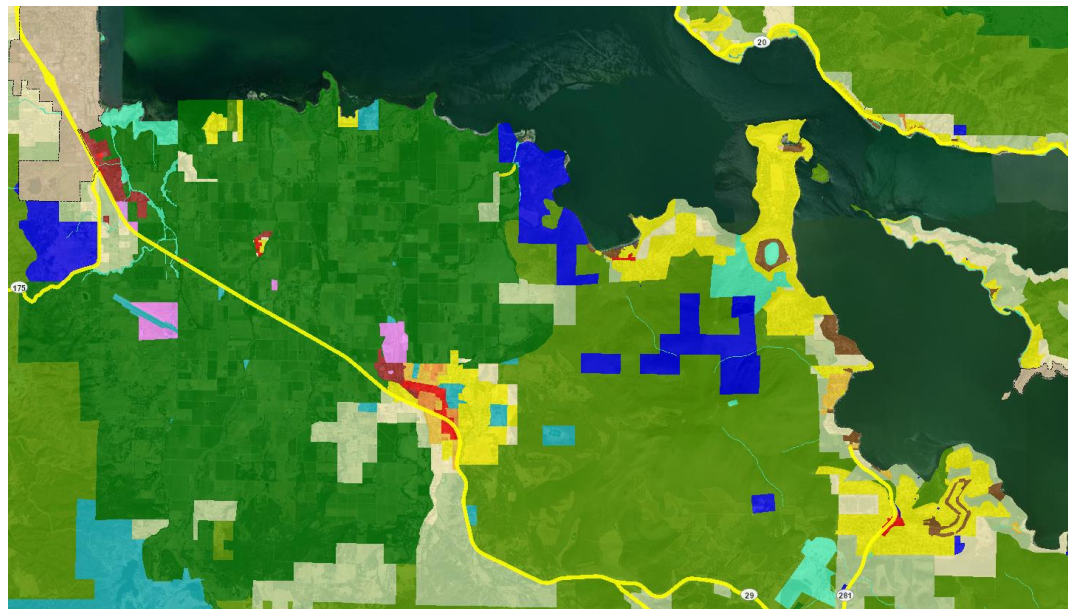
Special Study Areas

Community-Level Policy

Community Design Guidance

Land Use Map

- **Development standards for each land use designation**
 - Maximum residential density (housing units per acre)
 - Maximum non-residential density (floor-to-area ratio, or FAR)
- **Provides the framework for the Zoning Code**



General Plan Designations

PL - Public Lands
PF - Public Facilities
RC - Resource Conservation
A - Agriculture
RL Rural Lands
RR - Rural Residential
SRe - Suburban Residential Reserve
LDR - Low Density Residential
MDR - Medium Density Residential
HDR - High Density Residential
Cr - Resort Commercial
CI - Local Commercial
Cc - Community Commercial
Cs - Service Commercial
I - Industrial
City General Plan

Kelseyville/Rivieras Land Use Designations

Environmental Justice Element

What is Environmental Justice?



The fair treatment and meaningful involvement of people of all races, cultures, incomes, and national origins, with respect to the development, adoption, implementation, and enforcement of environmental laws, regulations, and policies.

CALIFORNIA GOVERNMENT CODE §65040.12(E)



Environmental Justice Element – Senate Bill 1000

- **In Equity Priority Communities:**
 - Reduce pollution exposure and improve air quality
 - Promote public facilities
 - Promote food access
 - Promote safe and sanitary homes
 - Promote physical activity
 - Support opportunities for community engagement
- **Engage the community in decision-making**
- **Prioritize improvements and programs that address needs in Equity Priority Communities**



Lake County 2050 Process

Phase	Schedule
Project initiation, background research, website/initial outreach	Fall 2023 – Spring 2024
Draft Countywide Element updates, Local Area Plan updates initiation and alternatives	Spring – Fall 2024
Draft Local Area Plans	Fall 2024 – Spring 2025
Environmental Impact Report	Spring 2025 – Spring 2026
Public review and adoption	Spring – Fall 2026

Opportunities to Participate

- **Local Area Plan Community Workshops**
 - Community-focused workshops at key milestones for LAP updates
 - May be held as part of a meeting hosted by the established advisory body for the planning area (e.g., MAC meeting)
 - Upcoming rounds:
 - Spring 2025: Review Draft General Plan
- **Stakeholder Focus Group Meetings**
- **General Plan Advisory Committee Meetings**
- **Local Area Plan Advisory Committee Meetings**
- **Planning Commission Meetings**
- **Board of Supervisors Meetings**
- **Project Website and Surveys:**
 - www.lakecounty2050.org



Community Workshop Series #1

- Workshops held in each LAP in Spring 2024
- Small group discussions on questions about:
 - Changes to the LAP boundaries
 - Changes to the community's planned land uses
 - Community assets to support, preserve, or enhance
 - Challenges to address and changes needed to make it a better place to live and work
- Workshop input led to:
 - Potential LAP boundary changes
 - Potential land use map changes
 - Key policy issues countywide elements
 - Key policy issues for each LAP



Summary of Key Issues Identified by the Community

Key Issues by Element

- **Land Use**
 - Small-Town Character
 - Community Beautification and Revitalization
 - Impacts of Cannabis Operations
- **Circulation**
 - Roadway Safety
 - Transit Access
 - Sustainable Transportation
- **Open Space, Conservation, and Recreation**
 - Conservation of Natural Resources
 - Recreation Access
 - Celebration and Amplification of Tribal History and Influences

Key Issues by Element

- **Environmental Justice**
 - Access to Reliable Power
 - Food Access
 - Healthcare Access
- **Public Facilities and Services**
 - Educational Services
 - Access to Affordable and Effective Utilities
 - Community Resources, Services, and Destinations
- **Economic Development**
 - Local Business
 - Tourism
 - Workforce Development and Jobs

Housing Action & Implementation Plan

Housing Action & Implementation Plan

- Comprehensive manual to address housing demands throughout Lake County
- Related to, but not a part of the General Plan

Components of the HAIP

- Analysis of Current Conditions
- Community Engagement Summary
- Gaps Analysis
- Goals and Strategies
- Action Steps and Resources
- Site Inventory and Analysis
 - » Online, interactive webmap

Timeline, 2024

MAY	JUN	JUL	AUG	SEP	OCT	NOV	DEC
May: Project kickoff May-July: → Data collection and analysis of current conditions		July-September: Stakeholder and community meetings, community survey July-October: → Identify potential housing sites, draft HAIP			October-December: HAIP review period, presentation to Board of Supervisors, HAIP final draft 		

Next Steps

Current and Next Steps

- **Summer – Fall 2024**
 - Community change surveys on each LAP
 - Local Area Plan Advisory Committee (LAPAC) meetings to review survey input on LAPs
 - General Plan Advisory Committee (GPAC) meeting to discuss land use map and policies issues
- **Fall 2024 – Spring 2025**
 - Prepare Draft General Plan
 - Incorporate survey feedback, plus LAPAC and GPAC input
 - Community Workshop Series #3
 - Additional LAPAC and GPAC meetings
- **Monitor the project website**
 - www.lakecounty2050.org

Questions, Answers, and Discussion