



# LAKE COUNTY

## Shoreline Communities and Upper Lake/Nice COMBINED LAPACs Virtual Meeting 1/20/2025

8:00 a.m. – 9:30 a.m.

Meeting Link below:

<https://teams.microsoft.com/l/meetup->

[join/19%3ameeting\\_MjU4MjllYWYtYTY1NC00ZjBkLWExNWtM2l5ZGU1MzM2OTdh%40thread.v2/0?context=%7b%22Tid%22%3a%220033291f-43f0-4d2f-aadb-c0f405dc3f3e%22%2c%22Oid%22%3a%224219ac4f-dfbe-4d62-b0b3-202fe6774952%22%7d](https://teams.microsoft.com/l/meetup-join/19%3ameeting_MjU4MjllYWYtYTY1NC00ZjBkLWExNWtM2l5ZGU1MzM2OTdh%40thread.v2/0?context=%7b%22Tid%22%3a%220033291f-43f0-4d2f-aadb-c0f405dc3f3e%22%2c%22Oid%22%3a%224219ac4f-dfbe-4d62-b0b3-202fe6774952%22%7d)

[Join the Virtual meeting](#)

Meeting ID: 291 685 060 53

Passcode: ZH6jj2s2

---

**Dial in by phone**

[+1 972-581-9848](tel:+19725819848), [22819338#](tel:+122819338) United States, Renner

[Find a local number](#)

Phone conference ID: 222 819 338#

1. Welcome and Introductions
2. Roll Call of LAPAC members
3. Discussion Topics:
  - Request for Land Use Designation change at 7033 Panoramic Dr., Lucerne, from Rural Lands to Low Density Residential
  - Request for Land Use Designation change for 3 parcels on East State Highway 20, Nice, from Resort Commercial to Community Commercial/Service Commercial
  - Request for addition of Senior Support Services related objectives and policies
4. Adjournment

Save the Date: General Plan Advisory Committee, February 13, 2025, at 3:00 p.m., in the Board of Supervisors Chambers, to consider draft General Plan maps, including all recommended changes. All LAPAC members are invited to attend. This is a Hybrid Meeting; the Webinar link is included below:

Join from PC, Mac, iPad, or Android:

<https://lakecounty.zoom.us/j/85383295948?pwd=OW1KaUNPKzlkTGE5UVVSbEhQUFdVQT09>

Passcode: 250842

Phone one-tap:

+16694449171,,85383295948#,,,,\*250842# US

Join via audio: +1 669 444 9171 US Webinar ID: 853 8329 5948 Passcode: 250842

NOT A LEGAL DOCUMENT

NOT A LEGAL DOCUMENT

NOT A LEGAL DOCUMENT



NOT A LEGAL DOCUMENT

Lake County, CA, Lake County, CA, Lake County, CA, Source: Esri, Maxar, Earthstar Geographics, and the GIS User Community

Lake County, CA

7033 Panoramic Drive\_Lucerne

Web AppBuilder for ArcGIS



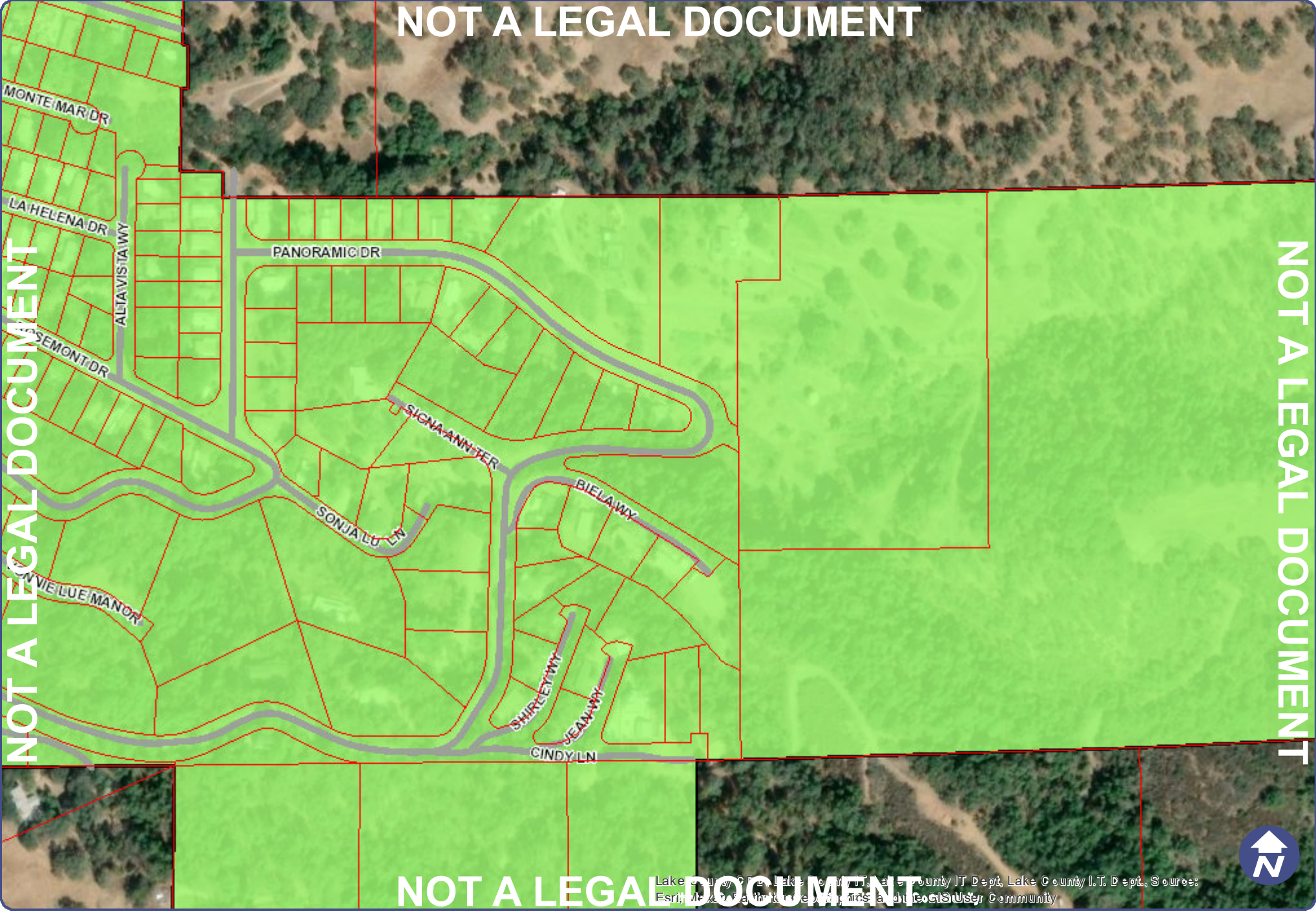
Print Date: 1/16/2025

All parcel boundaries are approximate. Discrepancies in acreage, shape and location are common. This map is not the legal survey document to be used in single site determinations. Consult your deed for a legal parcel description.

NOT A LEGAL DOCUMENT

NOT A LEGAL DOCUMENT

NOT A LEGAL DOCUMENT



NOT A LEGAL DOCUMENT

Lake County GIS, Lake County IT Dept, Lake County I.T. Dept., Source: Esri, Intellicart, Aerial Imagery, and User Community

Lake County, CA

7033 Panoramic Drive - CGB

Web AppBuilder for ArcGIS



Print Date: 1/16/2025

All parcel boundaries are approximate. Discrepancies in acreage, shape and location are common. This map is not the legal survey document to be used in single site determinations. Consult your deed for a legal parcel description.

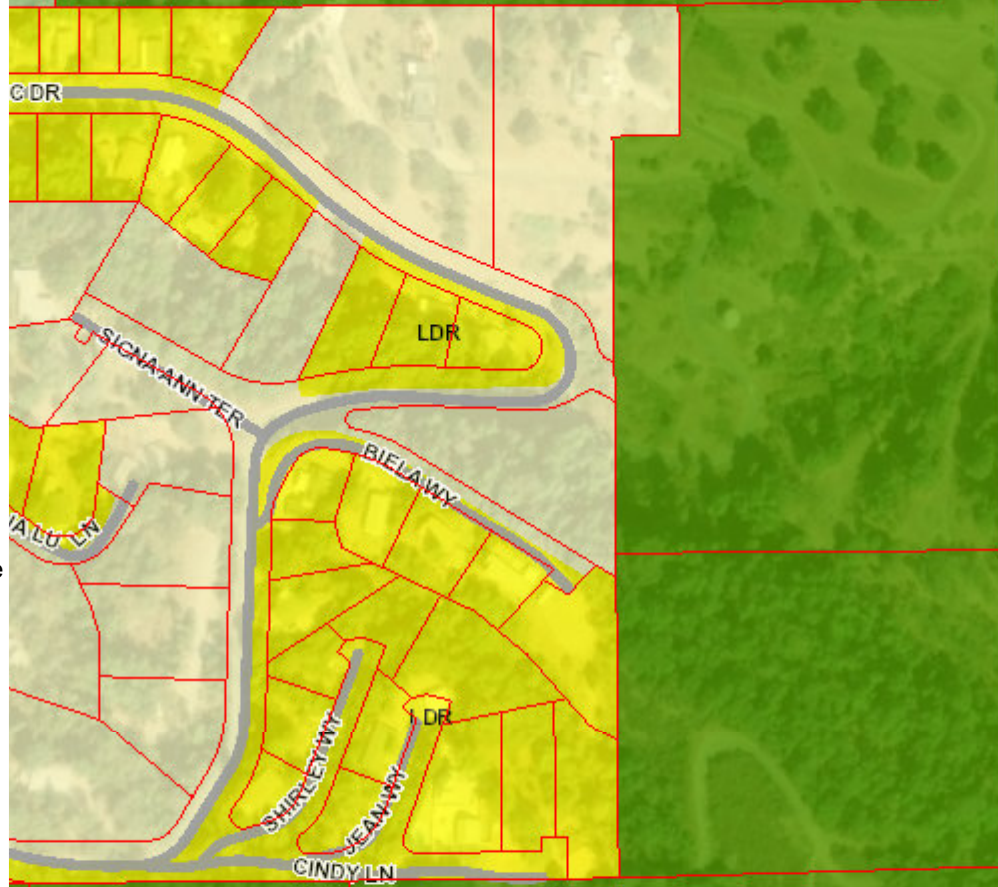
NOT A LEGAL DOCUMENT

Legend

- Parcels
- Roadways
- City Limits
- Highways
- Roads
- County

General Plan Designations

- PL - Public Lands
- PF - Public Facilities
- RC - Resource Conservation
- A - Agriculture
- RL - Rural Lands
- RR - Rural Residential
- SRe - Suburban Residential Reserve
- LDR - Low Density Residential
- MDR - Medium Density Residential
- HDR - High Density Residential
- Cr - Resort Commercial
- Cl - Local Commercial
- Cc - Community Commercial
- Cs - Service Commercial
- I - Industrial
- City General Plan



NOT A LEGAL DOCUMENT

NOT A LEGAL DOCUMENT

Lake County, CA, Lake County, CA Dept., Source: Esri, Maxar, Earthstar Geographics, and the GeoEye Community



NOT A LEGAL DOCUMENT

DOCUMENT

NOT A LEGAL DOCUMENT

**Legend**

- Parcels
- Roadways
- City Limits
- Highways
- Roads
- County
- % Slope**
- 0 - 10%
- 10% - 20%
- 20% - 30%
- greater than 30%



NOT A LEGAL DOCUMENT

Lake County Topog, Lake County Topog, Source: Esri, Maxar, Earthstar Geographics, AeroGRID, IGN, Swayze Community



Lake County, CA

7033 Panoramic Drive - Slope

Web AppBuilder for ArcGIS

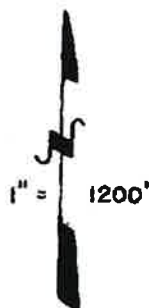


All parcel boundaries are approximate. Discrepancies in acreage, shape and location are common. This map is not the legal survey document to be used in single site determinations. Consult your deed for a legal parcel description.

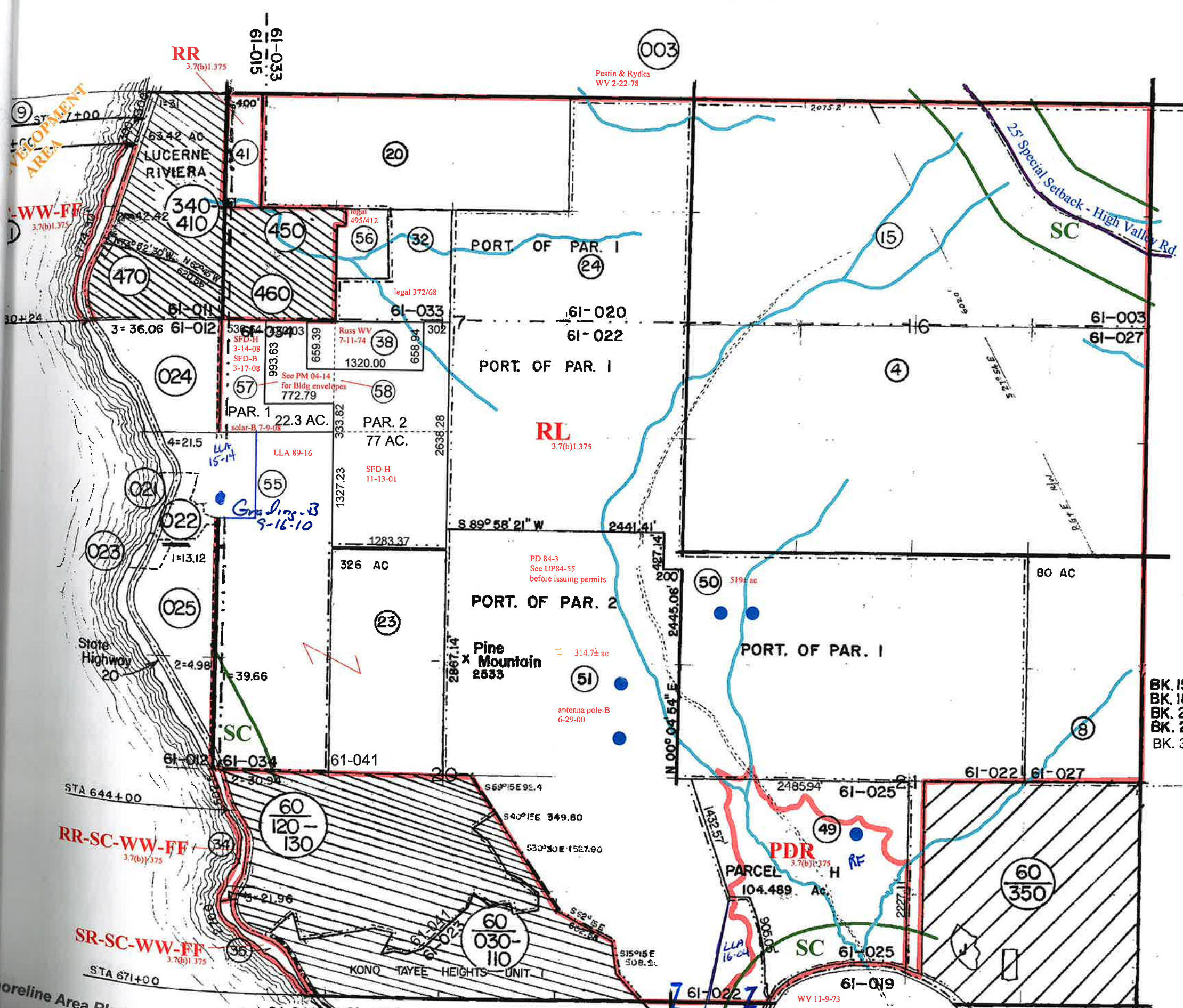
Print Date: 1/16/2025

T. R. A.  
 61-003  
 61-041  
 61-015  
 61-020  
 61-022  
 61-025  
 61-027  
 61-033  
 61-034

THIS MAP WAS PREPARED FOR  
 THE PURPOSES OF RECORDING AND  
 IS NOT TO BE USED FOR ANY  
 OTHER PURPOSE OR FOR THE  
 DELINEATION OF BOUNDARIES.



Assessor, Lake County



~ "SC"  
 ~ "WW" 20' buffer

BK. 15 P.M. PGS. 20 & 21  
 BK. 18 P.M. PGS. 20 & 21  
 BK. 20 P.M. PG. 20  
 BK. 26 P.M. PG. 7  
 BK. 38 P.M. PGS. 1-2

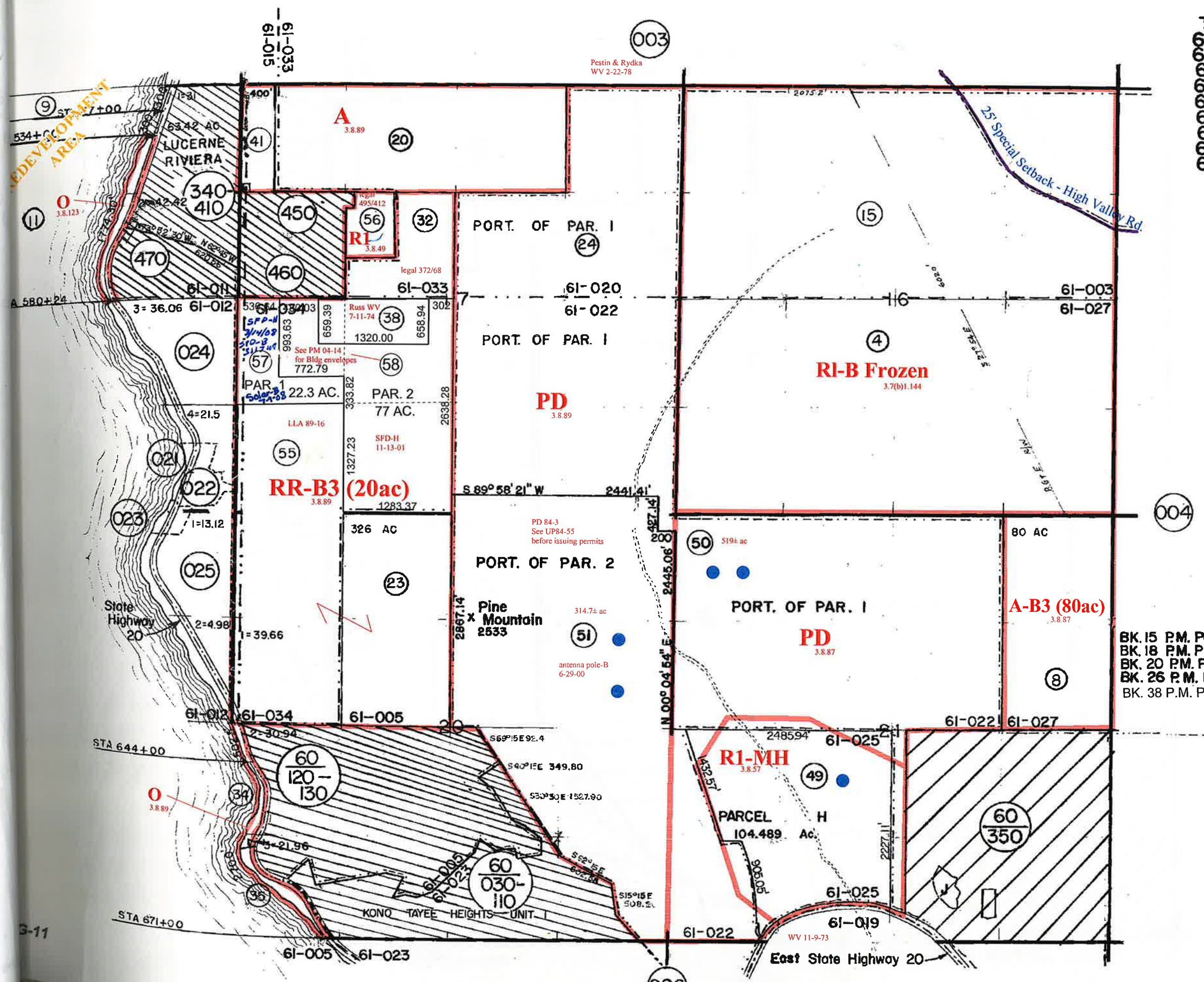
shoreline Area Plan

- T. R. A.
- 61-003
- 61-005
- 61-015
- 61-020
- 61-022
- 61-025
- 61-027
- 61-033
- 61-034



THIS MAP WAS PREPARED FOR  
 ASSISTANT PLANNING  
 NO LIABILITY IS ASSUMED FOR  
 THE ACCURACY OF THE DATA  
 DELIVERED HEREON.

Assessor, Lake County



BK. 15 P.M. PGS. 20 & 21  
 BK. 18 P.M. PGS. 20 & 21  
 BK. 20 P.M. PG. 20  
 BK. 26 P.M. PG. 7  
 BK. 38 P.M. PGS. 1-2

NOT A LEGAL DOCUMENT

NOT A LEGAL DOCUMENT

NOT A LEGAL DOCUMENT

004-032-18

004-032-17

004-032-12

004-032-19

004-032-16

20

004-032-20

004-033-08

004-034-13

004-033-09

BARTLETT SPRING RD

004-033-07

**Legend**

- Parcels
- Roadways
- Parcel Numbers
- City Limits
- Highways
- Roads
- County

NOT A LEGAL DOCUMENT

Lake County, CA Dept. of Public Works, Source: Esri, Maxar, Earthstar Geographics, AeroGRID, IGN, Swayze Community

Lake County, CA

E State Hwy 20 Aerial

Web AppBuilder for ArcGIS



Print Date: 1/16/2025

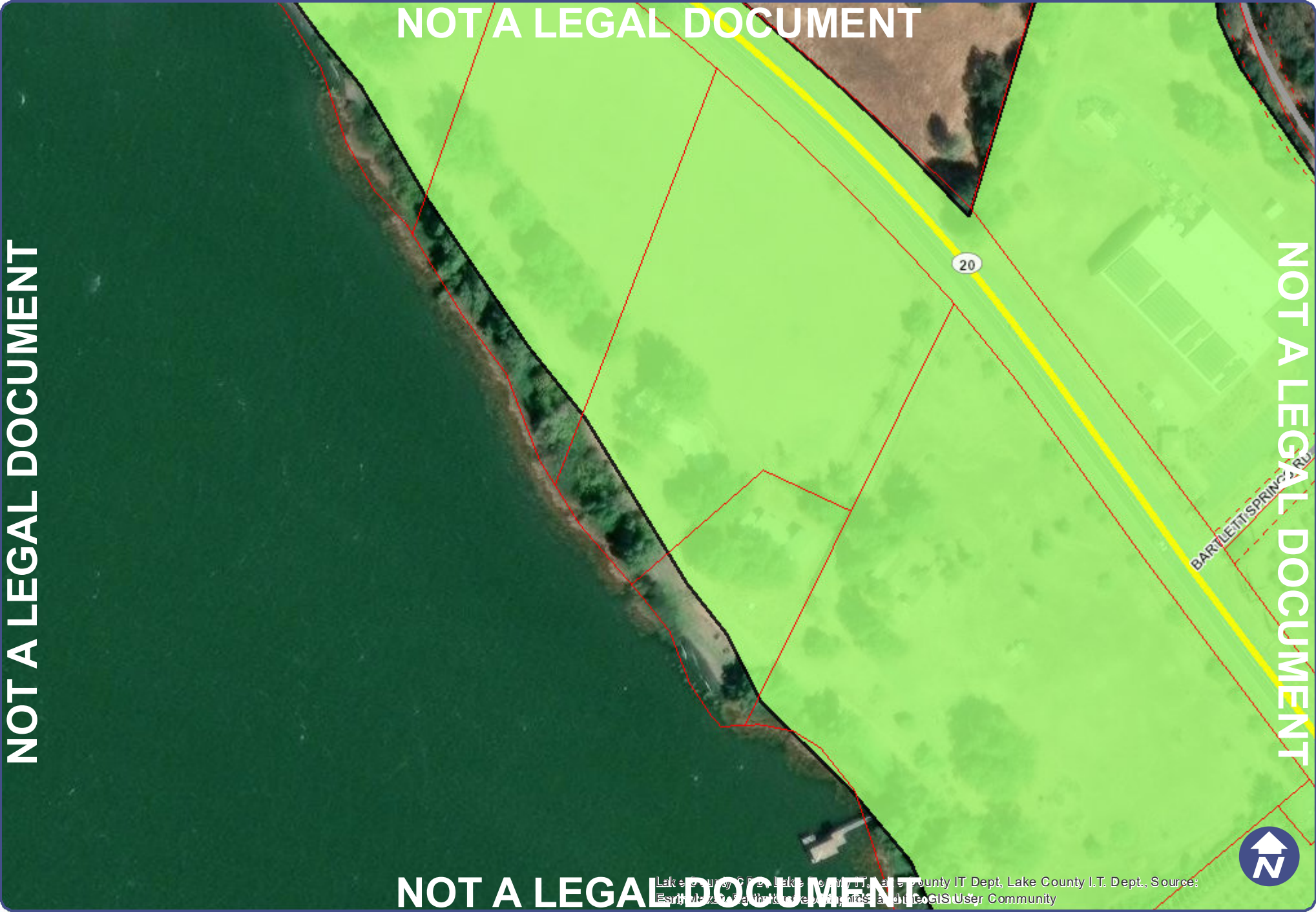
All parcel boundaries are approximate. Discrepancies in acreage, shape and location are common. This map is not the legal survey document to be used in single site determinations. Consult your deed for a legal parcel description.



NOT A LEGAL DOCUMENT

NOT A LEGAL DOCUMENT

NOT A LEGAL DOCUMENT



NOT A LEGAL DOCUMENT

Lake County GIS, Lake County IT Dept, Lake County I.T. Dept., Source: Esri, DeLorme, Garmin, IGN, Intermap, Inc, Swire, GeoGIS User Community

Lake County, CA

E State Hwy 20 CGB

Web AppBuilder for ArcGIS



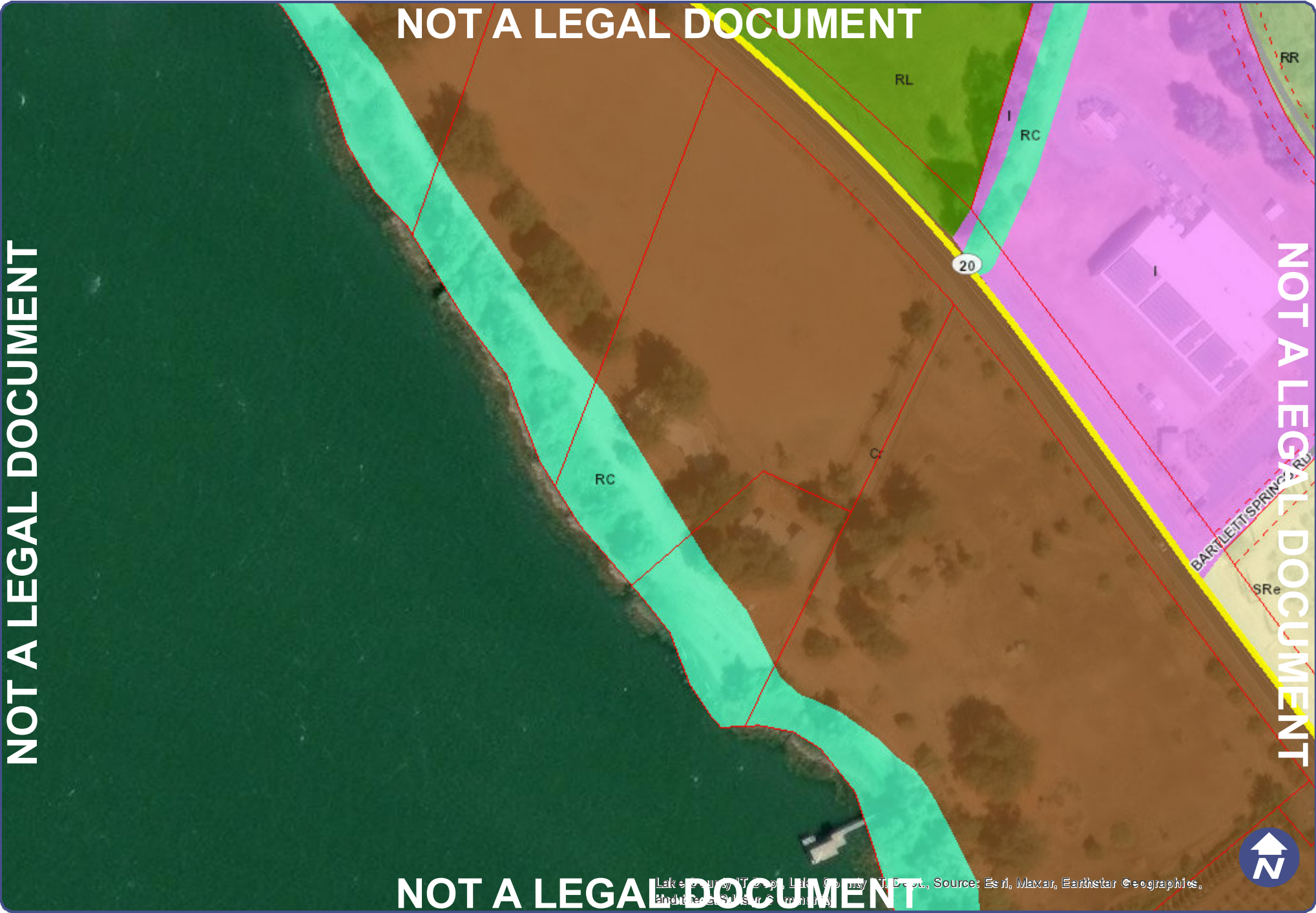
Print Date: 1/16/2025

All parcel boundaries are approximate. Discrepancies in acreage, shape and location are common. This map is not the legal survey document to be used in single site determinations. Consult your deed for a legal parcel description.

NOT A LEGAL DOCUMENT

NOT A LEGAL DOCUMENT

NOT A LEGAL DOCUMENT



NOT A LEGAL DOCUMENT

Lake County, CA, Lake County, CA, Lake County, CA, Source: Esri, Maxar, Earthstar Geographics, and the GeoEye satellite imagery.

Lake County, CA

E State Hwy 20 Land Use

Web AppBuilder for ArcGIS









Print Date: 1/16/2025

















All parcel boundaries are approximate. Discrepancies in acreage, shape and location are common. This map is not the legal survey document to be used in single site determinations. Consult your deed for a legal parcel description.

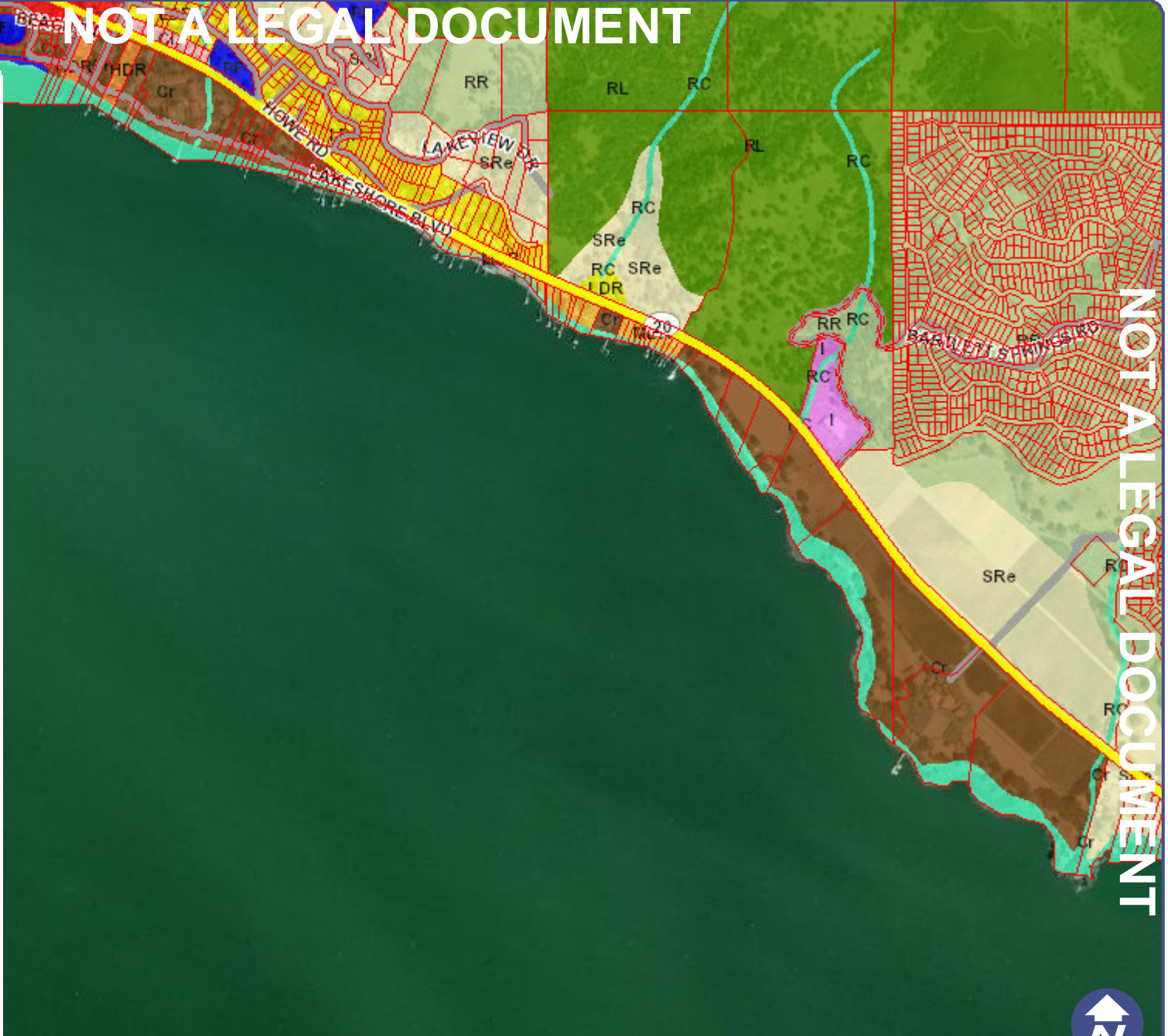
NOT A LEGAL DOCUMENT

**Legend**

-  Parcels
-  Roadways
-  City Limits
-  Highways
-  Roads
-  County

**General Plan Designations**

-  PL - Public Lands
-  PF - Public Facilities
-  RC - Resource Conservation
-  A - Agriculture
-  RL - Rural Lands
-  RR - Rural Residential
-  SRe - Suburban Residential Reserve
-  LDR - Low Density Residential
-  MDR - Medium Density Residential
-  HDR - High Density Residential
-  Cr - Resort Commercial
-  Cl - Local Commercial
-  Cc - Community Commercial
-  Cs - Service Commercial
-  I - Industrial
-  City General Plan



NOT A LEGAL DOCUMENT

NOT A LEGAL DOCUMENT

Lake County Topog, Lake County Dept., Source: Esri, Maxar, Earthstar Geographics, and the GeoEye Community



Lake County, CA

E State Hwy 20 Land Use - Vicinity

Web AppBuilder for ArcGIS




Print Date: 1/16/2025

All parcel boundaries are approximate. Discrepancies in acreage, shape and location are common. This map is not the legal survey document to be used in single site determinations. Consult your deed for a legal parcel description.




NOT A LEGAL DOCUMENT

NOT A LEGAL DOCUMENT





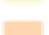



**Legend**

-  Parcels
-  Roadways
-  City Limits
-  Highways
-  Roads
-  County
-  Levees

**Flood Hazard Boundaries**

-  Limit Lines
-  SFHA / Flood Zone Boundary
-  Flowage Easement Boundary

**Flood Hazard Zones**

-  1% Annual Chance Flood Hazard
-  Regulatory Floodway
-  Special Floodway
-  Area of Undetermined Flood Hazard
-  0.2% Annual Chance Flood Hazard
-  Future Conditions 1% Annual Chance Flood Hazard
-  Area with Reduced Risk Due to Levee
-  Area with Risk Due to Levee



NOT A LEGAL DOCUMENT

Lake County Topographic Map, Lake County Floodplain, Sources: Esri, Maxar, Earthstar Geographics, and the GeoEye Community

January 10, 2025 - LAPAC/MAC/GPAC Draft:

Proposed Objectives, Goals, Policies, and Implementations specifically addressing "Senior Support Services" in the 2025 General Plan Update. Existing elements affected: Health & Safety, Public Facilities, Community Services [new element].

[NEW] OBJECTIVE: Serve the needs of Lake County residents aged 60+, multi-agency service providers, emergency responders, family caregivers, and civic/ social organizations active in disasters.

GOAL 1: Ensure that the County is fully prepared to survive and recover from all-hazard-driven emergencies inclusive of the Access & Functional Needs of Lake County residents and visitors.

POLICY 1: County shall develop emergency management services to “consider and promote the well-being and economic resilience of every Lake County resident” and “develop and maintain a high standard of Disaster Prevention, Preparedness and Recovery, in collaboration with all community stakeholders.” [Vision 2028 Priorities 1 and 4.]

IMPLEMENTATION 1: County shall develop a county-wide Master Plan (fed/state approved Emergency Operations Plan PLUS multi-agency plans) including non-governmental and quasi-governmental agency [i.e., COAD] integration in real-time response planning by the Operational Area Council.

IMPLEMENTATION 2: County shall provide an Operational Area Council report to the Disaster Council monthly\* via published bulletin (provided by the Risk Reduction Authority; inclusive of all responder agencies, Fire Safe Councils, Code Enforcement, Law Enforcement, Fire Protection Districts, Wastewater Management Districts [3?] — published by the County’s Public Information Office). [*See Implementation 5, below.*]

*[\*The Disaster Council meets four times a year; monthly reports via release by Lake County Public Information Office.\*\*]*

*[\*\*Said “office” exists as an Administration section, served by Deputy Chief Administrative Officer. The Sheriff’s Office PIO only deals with law enforcement related public information, under the direction of the Sheriff (who is the Director of Emergency Management for the entire county, as defined in Municipal Code*

*Chapter VI - CIVIL DEFENSE). The other entities in the county with official “Incident Command” centers (both cities and both hospitals) and the Public Health Services department have professional PIOs, and the PHS PIO is currently being trained by FEMA for official PIO responsibilities.]*

IMPLEMENTATION 3: Local Area Plans develop emergency management assessments and long-term “Specific Plans” for serving their planning area populations that meet the National Recovery Framework and the State Disaster Recovery Framework — focusing on essential health and safety services (power, communications, water, sewer, evacuation routes and “tiered” mass\* care and shelter facilities) assisted by County’s “Resilience Services” hub [created by the state’s Strategic Growth Council].

Include development of local planning area-defined Community Wildfire Protection Plans, evacuation services siting, facilities (existing and possible future), key infrastructure needs (cell tower, radio repeaters, reception area mapping).

IMPLEMENTATION 4: County shall review status of this OGPI as component of OPR-required annual General Plan review for the county Board of Supervisors.

IMPLEMENTATION 5: County shall develop FEMA-trained Public Information Office within the Administration department to provide comprehensive services for assisting the general public and all involved emergency management entities. The County PIO shall provide “customer” driven internet resource referral services, providing collection of data for management processes required by fed/state/local regulatory systems.

IMPLEMENTATION 6: County’s Public Information Office shall work with all local municipal agencies to respond to any local emergency incident as defined in the Emergency Operations Plan for roles and responsibilities of the Operational Area Council and County Disaster Council.

GOAL 2: Develop and maintain a “Master Plan” for serving the needs of vulnerable populations and supporting the network of governmental, quasi-governmental, and non-governmental organizations that assist those populations before, during, and after declared emergencies. [Vision 2028 Priorities 4 and 10.]

POLICY 2: County shall develop emergency management services meeting the needs of disabled residents and their “systems of care” (defined by the state Departments of Aging, Health Care Services, Rehabilitation, and Emergency Management Agency’s Office of Access & Functional Needs).

IMPLEMENTATION 1: Appoint the Office of Emergency Services Access & Functional Needs coordinator (as defined in the 2018 LC EOP Annex for Access & Functional Needs) to network with all governmental, quasi-governmental, and non-governmental organizations serving the county’s population of disabled residents, caregivers, and “systems of care.”

IMPLEMENTATION 2: Develop contractual agreements between population center meeting facility owners and community service organizations to provide “Community Resilience Centers” inclusive of primary service organizations serving as “senior centers” under federally-funded, state-administered, locally-managed contracts for assisting home-bound enrollees in Elder Nutrition Program functions (which include contractually required Emergency Action Plans for the emergency service functions).

IMPLEMENTATION 3: Develop funding and recruiting programs for volunteer-driven “Community Resilience Center” and senior center operations (including federally-defined CERT and CERC teams, American Red Cross “Community Adaptation Program” capacity building, Office of Emergency Services volunteer programs, Community Organizations Active in Disasters [COAD], and Public Health Services emergency response programs led by PHS’s Medical Reserve Corps).

IMPLEMENTATION 4: Integrate senior centers (as designated “essential services”) in the Office of Emergency Services Operational Area Council (as required by state regulatory statutes) and update the county-wide Emergency Operations Plan (including its Annexes) to include all “systems of care” service providers, for developing funding to fully equip those centers with emergency management communication systems and facility capacity upgrades supporting “Community Resilience Centers.”

IMPLEMENTATION 5: Activate the AmeriCorps/Senior Corps “Retired Senior Volunteer Program” processes in all contracted senior center operational systems, enabling acquisition of federal/state grant funding resources to achieve integration of senior centers in the Office of Emergency Services Operational Area Council and county-wide Emergency Operation Plan functions.