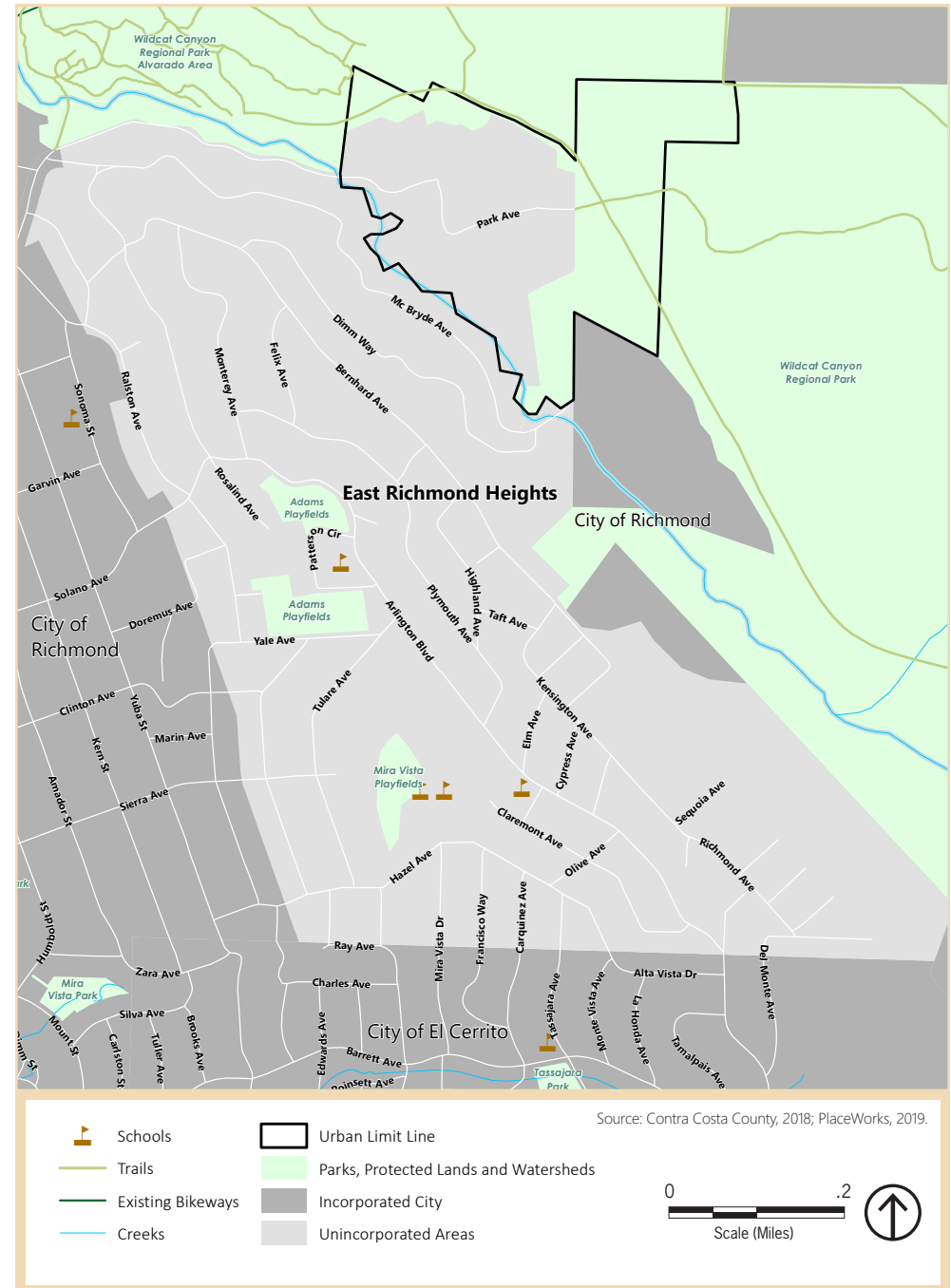


EAST RICHMOND HEIGHTS | CONTEXT

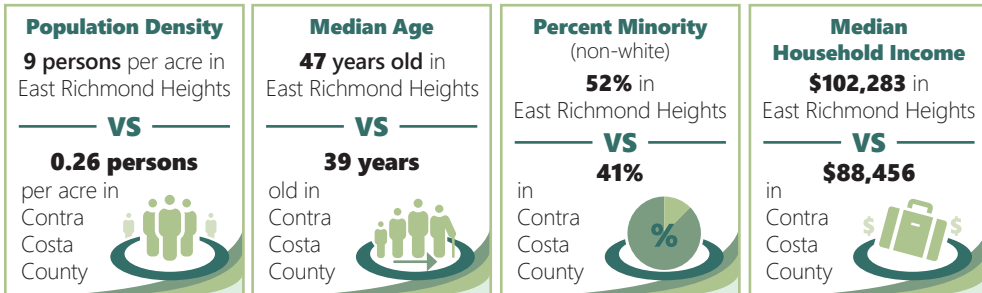
Situated north of El Cerrito and east of Richmond in the Berkeley Hills, East Richmond Heights is a primarily residential community. Adjacent open space in Wildcat Canyon provides respite and outdoor recreation for residents, who support enhancing open space access. Given East Richmond Heights' location, the community has a premier view of the San Francisco Bay, Mount Tam, and beyond. Residents cite the gorgeous views as an important community asset that should be preserved for generations to come. East Richmond Heights is also home to two schools, Crestmont School and Mira Vista Elementary School, which support the family-oriented, friendly community that the residents value. Interstate 80, located about a 1/2 mile to the west, provides regional transportation access, and Arlington Boulevard serves as the major north-south thoroughfare.



Despite the small-town community feel, residents are concerned about safety and formed the East Richmond Heights Neighborhood Watch team to prevent crime, enhance emergency preparedness, and improve neighborhood communication. In addition, residents would like more street lighting and new and expanded community facilities and events. Residents are also concerned about fire hazards from vegetation in Wildcat Canyon Regional Park and throughout the neighborhood, particularly from dead, standing trees. The community would like to enhance fire protection services and evacuation preparedness to ensure the residents are safe in the event of a natural disaster.



WHO LIVES IN EAST RICHMOND HEIGHTS?



EAST RICHMOND HEIGHTS | CONTEXT (CONTINUED)

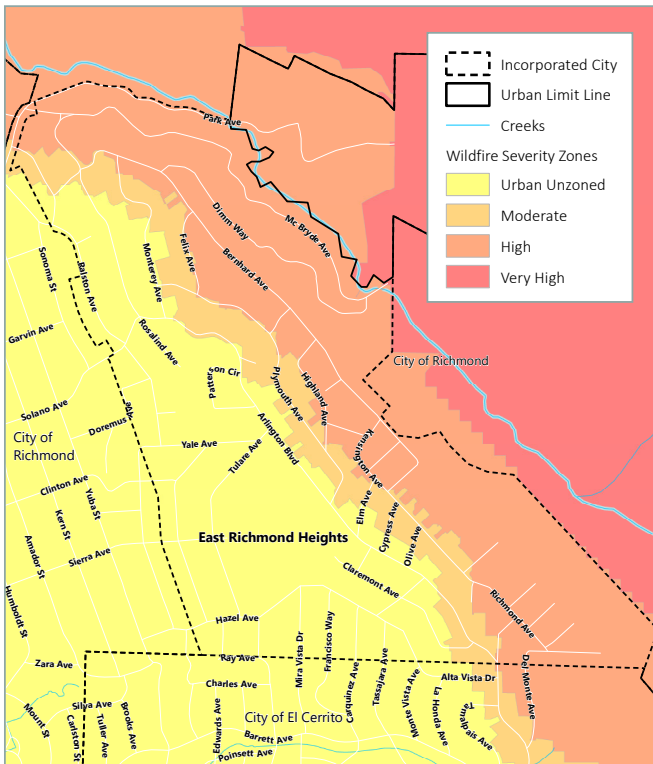
Climate Change Hazards

-  Air Quality
-  Drought
-  Extreme Heat
-  Flooding
-  Human Health Hazards
-  Landslides
-  Seismic Hazards
-  Severe Weather
-  Wildfire

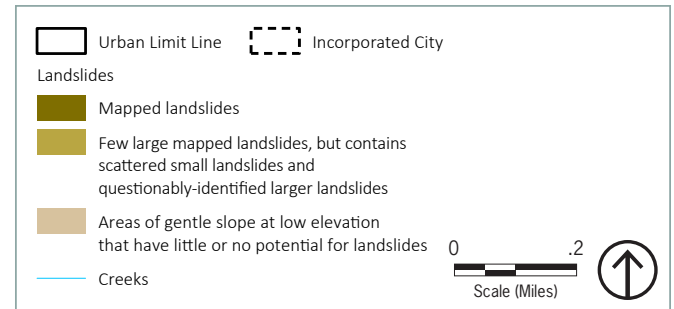
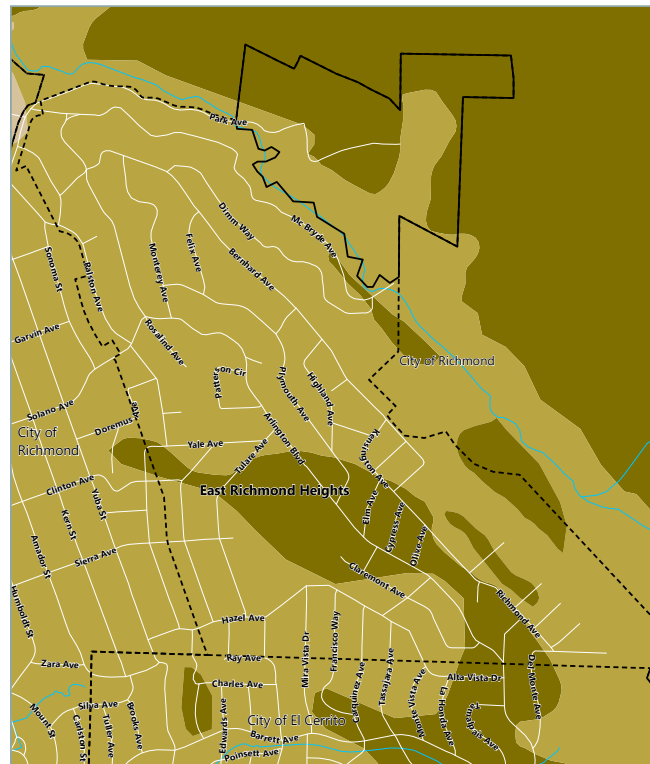
Major Climate Vulnerabilities

- Persons living on single access roads and seniors living alone are vulnerable to flooding, landslides, and wildfire.
- Cost-burdened households and renters are vulnerable to extreme heat, flooding, landslides, seismic hazards, severe storms, and wildfires.
- Persons with chronic illnesses and seniors (including those living alone) are vulnerable to air quality, extreme heat, human health hazards, and wildfire.
- Single access roads are vulnerable to damage from flooding, landslides, seismic hazards, and wildfire.
- Electricity transmission and distribution lines are vulnerable to landslides, wind from severe storms, and wildfire.
- Mira Vista Elementary, Adams Middle School, and Crestmont School are vulnerable to landslides, seismic hazards, and wildfires.
- Public safety and emergency medical response are vulnerable to flooding, landslides, severe storms, and wildfire.
- Woodland habitat in the eastern area of the community is vulnerable to drought, severe storms, and wildfire.

WILDFIRE HAZARD SEVERITY ZONES



LANDSLIDES

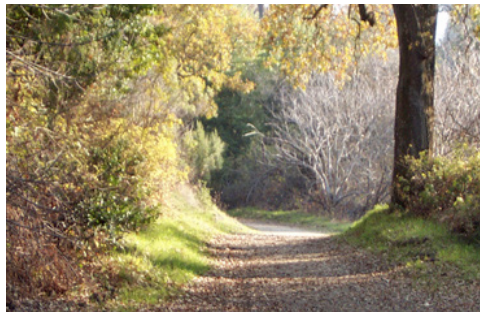


PLANNED LAND USE

Land use designations for East Richmond Heights are shown on the land use map. East Richmond Heights is planned primarily for single-family residential use, with small pockets of commercial uses, public/institutional sites, and open space lands.

East Richmond Heights contains two small commercial pockets intended to support neighborhood-serving businesses. One is located near the southern end of the community, at the intersection of Arlington Boulevard and Olive Avenue, and the other is located to the north, at the intersection of Bernhard Avenue and Felix Avenue.

East Richmond Heights' proximity to Wildcat Canyon Regional Park and Alvarado Park allows for easy access to outdoor recreational opportunities. As such, there are wide swaths of land designated for open space and park use. East Richmond Heights also includes multiple areas designated for public/institutional use. These sites include community facilities such as Crestmont School, Mira Vista Elementary, and numerous religious institutions.



GUIDING PRINCIPLES

1. East Richmond Heights has a small community feel as a result of the tightly packed single-family residential development. Residents know their neighbors and care for each other and the community. This tightly knit, small community feel should be preserved.
2. East Richmond Heights' panoramic views of San Francisco Bay, bridges, cities, and natural landscapes should be preserved.
3. Existing public services, such as the Contra Costa County Sheriff's Office and Fire Protection District, should be supported and enhanced in order to ensure a safe community.
4. Because East Richmond Heights is proximate to Wildcat Canyon Regional Park and the Hayward Fault, it is exposed to potentially severe wildfires and earthquakes. The community should be protected from these hazards through proper planning and emergency response.

POLICIES

1. When reviewing new development proposals, prioritize the need for mitigation of wildfire and earthquake exposure as appropriate.
2. Ensure new development provides reasonable protection for existing residences with regard to views, design compatibility (including building mass, height, and mechanical devices), adequate parking, privacy, and access to sunlight.
3. When reviewing new development proposals, ensure views of scenic natural features (e.g., San Francisco Bay, mountains) and the developed environment (e.g., bridges, San Francisco skyline) are substantially preserved.
4. Improve pedestrian and roadway infrastructure in a manner that balances the needs of users with the desire to maintain East Richmond Heights' small community feel.
5. Promote local-serving commercial establishments to encourage local business growth and opportunities for residents to conduct business within their own community.
6. Explore the possibility of siting and constructing a library in East Richmond Heights.
7. Improve access to medical facilities and services.

ACTIONS

1. Coordinate with public safety and health agencies to create a comprehensive emergency plan, including establishing evacuation routes in East Richmond Heights.
2. Improve pedestrian safety and roadway infrastructure by completing sidewalk gaps, installing continuous street lighting, illuminated crossings, delineated on-street parking spaces along major roads, and ADA facilities.
3. Underground utilities to reduce fire hazards and improve community safety and appearance.
4. Prioritize review of projects incorporating community-serving medical facilities and services.
5. Assess the feasibility of adding floor area ratio, lot coverage limitations, or other development standards to the zoning districts in East Richmond Heights.